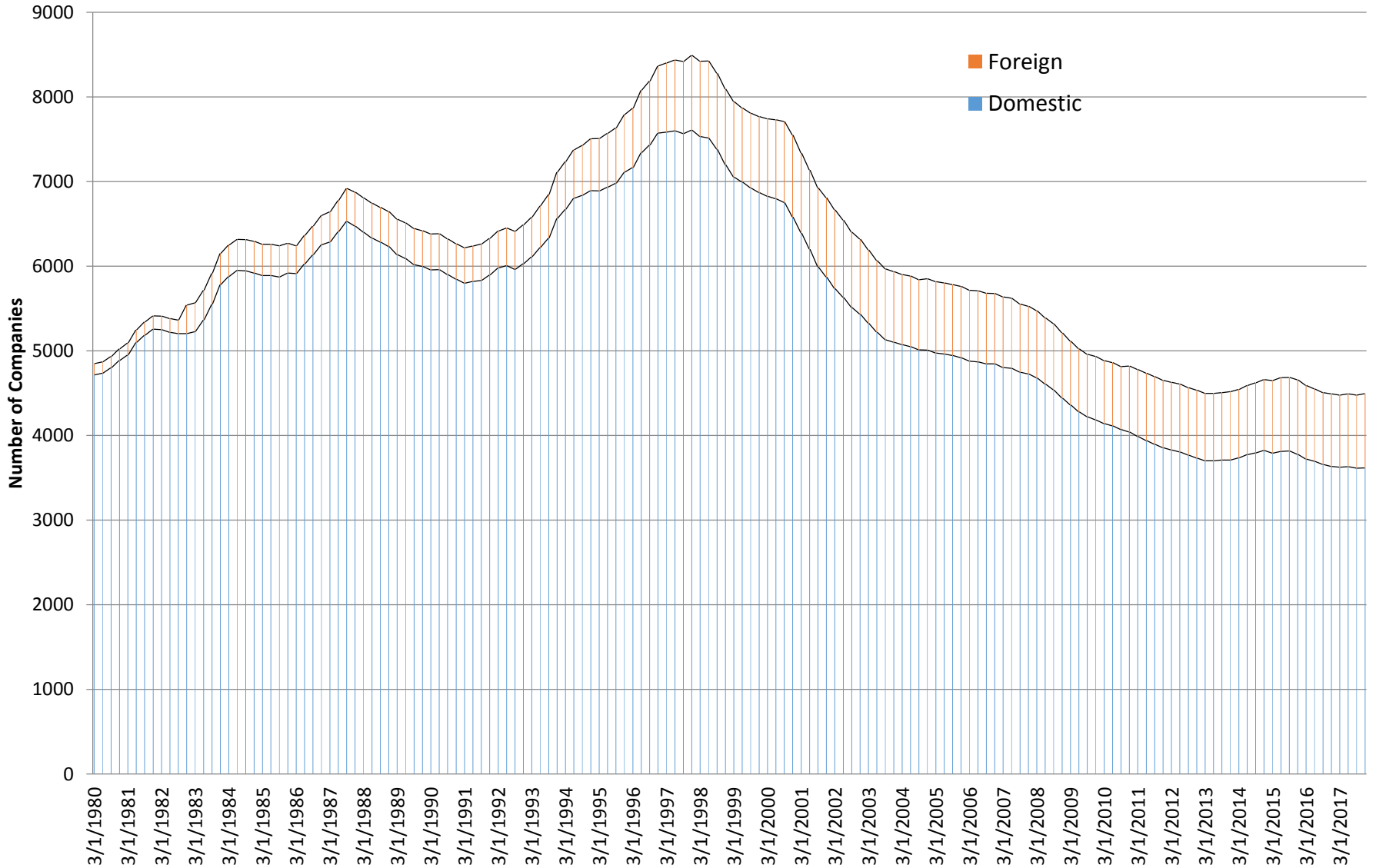


# Number of Domestic Companies Listed on CRSP



Note: Operating companies only (i.e., no limited partnerships, closed-end funds, REITs, ETFs) listed on Nasdaq, NYSE, and Amex (now NYSE MKT). CRSP is the University of Chicago's Center for Research in Security Prices. Quarter-end numbers are plotted, 1980-2017.

# Number of Foreign and Domestic Operating Companies listed on CRSP



CRSP-listed operating companies include NYSE and Nasdaq (and Amex before 2009) issues